



TMU
TAIPEI
MEDICAL
UNIVERSITY

Contents

TMU CHRONOLOGY	02
A WORD FROM PRESIDENT	08
INTRODUCTION OF COLLEGES	
College of Medicine _____	12
College of Oral Medicine _____	14
College of Pharmacy _____	16
College of Nursing _____	18
College of Public Health _____	20
College of Medical Science and Technology _____	22
College of Humanities and Social Sciences _____	24
College of Biomedical Engineering _____	26
College of Management _____	28
College of Nutrition _____	30
College of Interdisciplinary Studies _____	32
TMU HEALTHCARE SYSTEM	
Taipei Medical University Hospital _____	36
TMU Wanfang Medical Center _____	37
TMU Shuang Ho Hospital _____	38
TMU Taipei Cancer Center _____	39
TMU Taipei Neuroscience Institute _____	40
Ningbo Medical Center LiHuiLi Eastern Hospital Taipei Medical University Ningbo Medical Center _____	41
Taipei Medical University Hsin Kuo Min Hospital _____	42
INTERNATIONAL MEDICAL	
Health Care Beyond Borders _____	44
Lead regionally, connect globally _____	46
A Welcoming Campus for International Students _____	48

TMU CHRONOLOGY

Taipei Medical University



February 23, 1960

The College's two founders, Dr. Hu Shui-Wang and Hsu Chien-Tien photographed in front of the College's preparatory office on Hankou Street.



June 11, 1960

Group photo of the Inaugural Class

**September 8,
1959**

The Board of Trustees for "Taipei Medical College" was established, with Dr. Hu Shui-Wang serving as the chairman. Dr. Hsu Chien-Tien was the first dean of the College.

**February 23,
1960**

The Ministry of Education approved the school's application to establish Taipei Medical College on June 1.

**June 11,
1960**

June 1 was designated as the College's anniversary. "Honesty and Simplicity" was selected as its motto.

**June 1,
1970**

The College held its campus-wide sports day on its 10th anniversary, and established the Alumni Association.

**August 1,
1960**

The School of Medicine, School of Dentistry and School of Pharmacy were established, and welcomed their inaugural class of students.



August 1, 1976
Taipei Medical University Hospital



July 17, 1996
Taipei Municipal Wanfang Hospital

●

**August
1976**

The Taipei Medical University Hospital opened.

●

**August 1,
1983**

Established Master's Degree Program under the Graduate Institute of Pharmacy, which became the College's first graduate institute.

●

**May
1989**

Established the Student Association.

●

**July 17,
1996**

The Taipei City Government commissioned the College to operate Taipei Municipal Wanfang Hospital. It's the second affiliated hospital.



March 8, **2004**
Taipei Medical University



2008
Medical Mission in Kingdom of Eswatini

September 8, **2000**

The Ministry of Education approved Taipei Medical College's application to be renamed as Taipei Medical University (TMU).

March 8, **2004**

TMU signed a contract with the Department of Health to hold operation rights of Shuang Ho Hospital.

September **2006**

TMU was selected as a participant in the Ministry of Education's Elite Research Center Development Plan, and has received over NT\$600 million subsidies over the past 10 years for continual participation.

2008

TMU dispatched medical missions to two diplomatic allies in Africa.

July 1, **2008**

Shuang Ho Hospital, the first Build-Operate-Transfer project undertaken by TMU and commissioned by the Department of Health, was officially opened. It's TMU's third affiliated hospital.



July 1, 2008
Shuang Ho Hospital

2010

Selected by the Ministry of Education as one of the two flagship universities for general education in Taiwan.

The CSR reports of TMU and three affiliated hospitals received AA1000 and GRI G3 international accreditations.

2011

TMU passed five school evaluation indicators conducted by the Ministry of Education.

2012

All three affiliated hospitals received US Joint Commission International (JCI) accreditation

TMU and three affiliated schools won Executive Yuan National Quality Award (13th, 20th, 21th and 22th respectively).

2013

Received accreditation from Foundation for International Cooperation in Higher Education of Taiwan (FICHET), while being re-designated by the WHO as a member of its International Safe School Network.

Launched Taiwan Health Center program in Marshall Island.



March 21, 2014

Translational Cancer Research Center's Academic Research Team

March 21,
2014

TMU's Translational Cancer Research Center received NT\$100 million grand for being selected in the Ministry of Education's Aim for the Top University Program.

2014

Ranked 46th in the QS Asia University Ranking and among top 400 universities in QS World University Ranking. Ranked in the top 100 in medicine, and top 200 in pharmacy and pharmacology.

2015

Signed bilateral medical cooperation MOU with Panama.

2016

Awarded funds from International Elite Cultivation Project under the Ministry of Education to promote the project jointly with University of Chicago and the Johns Hopkins University.

April 17,
2018

College of Interdisciplinary Studies officially opened.

April 21,
2018

TMU Taipei Neuroscience Institute officially opened.



June 18,
2019

The cooperation management model between TMU and Hsin Kuo Min Hospital has been started

BECOMING A WORLD-CLASS UNIVERSITY

A Message from President Chien-Huang Lin

Established in 1960, Taipei Medical University (TMU) has developed into a full-fledged university with 11 colleges, a general education center, 6,000 students, and more than 45,000 alumni at home and abroad. Besides, TMU possesses seven affiliated hospitals—TMU Hospital, Taipei Municipal Wanfang Hospital, Shuang Ho Hospital, Taipei Cancer Center, Taipei Neuroscience Institute, TMU Ning Bo Medical Center, Hsin Kuo Min Hospital—equipped with about 4,000 beds and operated by over 8,000 faculty and staff members.

TMU is established to be an institute of research with focus on both medical education and clinical practice. Upholding TMU's core values "Humanity, Integrity, Innovation, Collaboration, and Service," we develop an integrated curriculum of teaching, research, industrial collaboration, and medical care, striving to train students with biomedical insights, humanitarian concerns, innovation capacity, and global vision. To achieve this educational goal, we have integrated resources within the university and hospitals while marching toward the status of a world-class university.

Our efforts have won growing recognition and reputation from home and abroad. This year, TMU is ranked 367th in the 2020 Times Higher Education (THE) World University Rankings and 379th in QS 2020 World University Rankings. In Asia, TMU is ranked 64th in THE and 74th in QS 2020 Asia University Rankings. In Taiwan, TMU

received a five-year NT\$1.335 billion research grant (NT\$267 million each year) from the Ministry of Education's Higher Education Sprout Project in 2018, the highest grant ever offered to a private university.

In terms of education, the College of Interdisciplinary Studies was set up in 2018 with three subdivisions: an Interdisciplinary Learning Center, an Innovation Entrepreneurship Education Center, and a Digital Initiative Center. This college serves as a platform for innovation and entrepreneurship, and cultivates biomedical talents with interdisciplinary and comprehensive training. In research, our emphasis is increasingly put on expertise in cancer translational medicine, neuroscience, pulmonary medicine, AI in medicine, cell therapy, and medical device. With research strengths and results being recognized by the government and funding agencies, we have already secured several major research grants in these areas.

As for industrial cooperation, TMU has helped incubate 17 startups, and raised an Entrepreneurship Fund that offers support to accelerate the commercialization of research findings along with the establishment of TMU Biomed Accelerator. Finally, the imminent launch of TMU Biotech Park in Shuang Ho Campus will complete the ecosystem for TMU's innovative entrepreneurship.

In terms of internalization, TMU has partnered with universities around the world, such as Johns Hopkins University, Case Western Reserve University, University of Southern California, Imperial College London, Université de Lille, and Hokkaido University, to name but a few. As of 2020, we have 708 international students, making up 11% of the enrollment; and the number of publications with international collaboration has reached a record high at 33.9%.



With the unsparing support from the board members, alumni, faculty and staff, we have been pushing forward new facility projects during the past years. Two new buildings—the Dream Way Building and the College of Humanities and Social Sciences Building—were launched in 2018, with another two constructions—Taipei Cancer Center and the Proton Center—to be completed in 2020. Furthermore, Shuang Ho Campus is scheduled to operate in 2022 with one building for teaching and research, the other for biotech and industry incubation. With a total floor area of 76,033 square meters, TMU Biotech Park will serve as a translational platform to bridge university, hospitals, and industry.

In response to global trends, TMU faculty members and students have reached a consensus to formulate the “TMU 2030: A White Paper for Ten-year Development.” To envision our goals and strategies in the next decade, we stick to the guideline of “embracing changes and creating values.” Our development strategies focus on six major areas—cultivating interdisciplinary biomedical talents, developing world-class research areas, building an innovative and entrepreneurial ecosystem, upgrading TMU’s international impact, enhancing the supporting efficiency of the administrative system, and strengthening the medical-industry chain. With a practical planning and steady steps, we endeavor to become one of the world’s leading universities.

In the years ahead, TMU will strive to become the workplace where faculty and staff enjoy working with a sense of accomplishment, the school where students pursue their dreams in a lively and liberal environment, and the alma mater for our alumni to take pride in feedback. Together, we will visualize the blueprint of a new TMU with “joy, hope, and happiness” in the upcoming decade.

INTRODUCTION OF COLLEGES

Taipei Medical University



Departments

School of Medicine

School of Respiratory Therapy

Graduate Institute of Clinical Medicine

Graduate Institute of Medical Sciences

Master Program in Respiratory Therapy

The International Master Ph.D. Program in Medicine

The International Ph.D. Program infor Cell Therapy and Regeneration Medicine

TMU Professional Master Program in Artificial Intelligence in Medicine

Honors and Specialties

First college in Taiwan to stage "White Coat Ceremony" for medical students

First college in Taiwan to establish the School of Respiratory Therapy and the Master Program in Respiratory Therapy

First college in Taiwan to establish International Ph.D. Program for Cell Therapy and Regeneration Medicine

A total of 14 alumni received Taiwan Medical Contribution Award

Set up six college-level Research Centers; Center for Reproductive Medicine and Sciences, Center for International Tropical

Founded in 1960

COLLEGE OF MEDICINE

The College of Medicine cultivates health professionals and leaders with the educational goal of serving local communities. We emphasize humanities in medical education, and help students develop compassion, global vision, communication skill, leadership, social responsibility and international competitiveness. The College comprised seven academic units, 600 faculty members including full-time professors, adjunct professors and clinical instructors, and 1600 students from our undergraduate, Master's and Ph.D. programs.

The School of Medicine initiated the Freshman Inauguration, Human Anatomy Remembrance Ceremony and White Coat Ceremony in Taiwan. We have also created the On Doctoring Program (Early Clinical Exposure), Objective Structured Clinical Examination (OSCE), and Group OSCE clinical practice training system, which have been regarded as role models for medical schools nationwide.

TMU is the first university in Taiwan to establish the School of Respiratory Therapy, which was founded in 2003. The College further established the Master Program in Respiratory Therapy in 2015 to offer the Master's degree in health science with the specialization in respiratory therapy. In 2016, we collaborated with Georgia State University of the USA to institute 'Integrated Master's Degree'. Through this dual degree program, we provide international academic exchange opportunities with an aim to broaden students' global visions and to cultivate advanced clinical practitioners.

The goal of the Graduate Institute of Clinical Medicine is to train physicians for a career as Physician Scientists with exceptional research capacities. Three core aspects of our curriculum are Disease-Oriented Research, Research-Oriented Learning and Dual mentorship. We offer courses in clinical trials, translational medicine, clinical & translational epidemiology, clinical evidenced medicine, cell biology, molecular biology, lab rotation and research techniques, applied statistics, research design, advanced paper writing and genetic medicine. With these independent research skills, we envision our graduates to improve the quality of medical care and promote social welfare.

The Graduate Institute of Medical Sciences (GIMS) is specifically designed for graduate students who are interested in translational research in biomedical sciences. GIMS offers master's and doctoral degrees in four programs, including (1) Biochemistry/Cellular and Molecular Biology (MCMB), (2) Cellular Physiology/

Neuroscience Science (CPNS), (3) Molecular Pharmacology (MP) and (4) Microbiology/Immunology (MI). The goal of Master's Programs in GIMS is to instill our students with fundamental knowledge in biomedical sciences and refined skills in conducting scientific experiments, so that they will become experts in research. The goal of Ph.D. program, on the other hand, is to educate students with the most modern multidisciplinary knowledge and become independent investigators. With an impressive record, GIMS cultivates high-caliber students who start their promising careers soon after graduation.

The International Master/Ph.D. Program in Medicine (IGPM) was founded in 2016. The IGPM recruits international students from Vietnam, Indonesia, United States, Switzerland, Gambia, and Malawi with expertise in clinical professions, biomedical research and healthcare areas. To accommodate individual aspiration, interests and career goals, IGPM designed flexible study schemes and courses for students. These courses are categorized into six areas including (1) Molecular Medicine, (2) Community Medicine, (3) Tropical Medicine, (4) Neurological Medicine, (5) Clinical Medicine, and (6) Healthcare Education. The goal of IGPM is for our students to become elite scholars or scientists with abilities to initiate research projects and conduct independent research, thus play significant roles in their own professional fields. Furthermore, we expect IGPM alumni to build an academic bridge between TMU and their home countries for more international collaborations in medicine and biomedical research.

The International Ph.D. Program for Cell Therapy and Regeneration Medicine (IPCTRM) began to recruit students in the fall semester of 2017. The mission of this program is to promote translational medicine and clinical trials of cell/stem cell based therapy. IPCTRM provides diverse research topics, including immune cell applications in cancer treatment; blood and mesenchymal stem cells for regenerative processes, wound healing, graft-versus-host disease, and amyotrophic lateral sclerosis; as well as drug screening platform with cancer stem cells and disease-specific induced pluripotent stem cells. IPCTRM brings experts and scientists together to facilitate outstanding research not only in basic study, but also in clinical translational medicine and industrial cell/stem cell product development.

Founded in 2018, TMU Professional Master Program in Artificial Intelligence in Medicine focuses on the rise of artificial intelligence. The goal of the program is to cultivate interdisciplinary talent by providing integrated courses in artificial intellectual skill and medical knowledge, and to construct precise medicine and technology. We provide in-service specialization program through intensive courses and clinical practice, including analysis of signal/data, semantics, image recognition and clinical medicine, smart hospitals and other professional courses. The program aims to strengthen students' ability to integrate cross-field learnings and cultivate artificial intelligence talent for Taiwan's medical industry.

Internationalization and academic excellence are the core missions of the College of Medicine. We regularly affiliate with elite institutions worldwide and work closely with them to seek breakthroughs in medicines. We also expect to strengthen our research characteristics and international visibility through such international cooperation.



Departments

School of Dentistry

Bachelor's, Master's and Ph.D. programs

School of Dental Technology

Bachelor's and Master's programs

School of Oral Hygiene

Bachelor's program

Honors and Specialties

The largest digital teaching base for clinical dentistry in Asia

The nation's only integrated model clinical laboratory

The largest oral care clinical practice program in Taiwan

"Oral Care Service Team" and "Overseas Medical Mission" have dedicated time and efforts in remote villages and areas short of medical resources

Proactively promotes international exchange and encourages students to participate in exchange programs in cooperation with well-known universities in the United States, Japan, and Europe.

Founded in 2000

COLLEGE OF ORAL MEDICINE

College of Oral Medicine provides the most comprehensive oral medicine education system and the largest oral medicine clinical practice program among the eight oral medicine programs in Taiwan.

School of Oral Hygiene, established in 2001, was the first oral hygienist education program in Taiwan. School of Dental Technology was also the nation's first such program set up in university system.

School of Dentistry was one of the first three schools founded in TMU, and has been the first choice for candidates applying to private institutions.

Highlights of the College's research and development include (i) oral cancer and temporomandibular joint dysfunction, (ii) big data analysis/ data mining, (iii) dental materials, bone graft and stem cell applications, (iv) computerized/digitalized facial reconstruction (v) 3D computer-aided design and manufacturing (3D CAD/CAM).

The College is not limited to training clinical staff, but seeks to connect with both academia and the industry in an effort to cultivate holistic talent who are able to balance education, research and patient care.

The School of Dentistry was established in June 1960. In 1993, the school established Master's program, and Ph.D. program started in 2004. Currently, the school has 10 academic divisions, including Operative Dentistry, Periodontology, Orthodontology, Oral and Maxillofacial Surgery, Pediatric Dentistry, Endodontics, Dental Morphology and Dental Materials, Occlusion and Temporomandibular Disorder, Dental Humanities and Oral Hygiene.

The school has been dedicated to basic dental study and clinical practice. The department of dentistry offers Independent Study course, Clinical Clerkship program, and clinical teaching models of OSCE, GOSCE and TRM. Master's and Ph.D. programs offer dual advisor system, which recruits "clinical specialist advisors" and "basic medical researchers" as faculty members.

The School of Dental Technology is the only dental technician program established by College of Oral Medicine in Taiwan, combining aesthetics with medical humanities and developing a comprehensive curriculum on digital oral engineering automation.

As the division of work in oral medicine is based more on specializations, the school has furthered three research targets in Master's program: oral biomaterials, digital oral engineering, and oral tissue regeneration. The school expected students to proceed with oral medicine studies while acquiring professional certificates in order to enable sustainable development in oral technology.

TMU is the first university to establish the School of Oral Hygiene (SOH) that is dedicated to cultivating oral hygiene professionals with humanities, social responsibilities and global visions. The goal is to advance our oral medicine education in accordance with global trends and improve the quality of oral care in Taiwan.

The school is equipped with comprehensive facilities including dentistry skull model classroom, technology lab, and dental clinic model classroom. The school recruits 35 students every year, and invites professionals to offer courses in basic knowledge of oral hygiene, oral hygiene promotion, disease prevention and clinical training. There are special programs on oral hygiene problem-based learning, OSCE test on oral hygiene clinical skills, and international courses on oral hygiene. The school also offers clinical training opportunities at local communities, teaching clinics and dental departments in affiliated universities. These opportunities equip students with both professional/clinical capabilities in oral hygiene, as well as skills in community education and communication.

The educational purposes of the College are humanism, excellence, internationalization, and research orientation. Our achievements in holistic education, research and development, community service and academic-industry links have won recognitions from the government, the industry, the academia, and the medical community. Our goal is to prepare TMU students to triumph in global academic community and develop international perspectives.



Departments

School of Pharmacy

4-year BS/ 6-year Pharm. D./
MS/ Master's Program in Clinical
Pharmacy

Graduate Institute of Pharmacognosy

Master's Program in Clinical Pharmacogenomics and Pharmacoproteomics

**Ph.D. Program in Clinical Drug
Discovery from Botanical Herbs**
(joint program with the National
Institute of Chinese Medicine of the
Ministry of Health and Welfare)

Ph.D. Program in Biotechnology Research and Development

Honors and Specialties

Ranked 94th in 2019 QS World University
Rankings for Pharmacy & Pharmacology

Signed dual degree with Department
of Regulatory and Quality Sciences of
University of Southern California

Signed dual degree with St. John's
University (Pharmacy Administration and
Public Health Program)

Student exchange programs with University
of Southern California, University of Illinois
at Chicago, University of Connecticut,
University at Buffalo State University of New
York, and Hokkaido University

International academic cooperation
with Hokkaido University, Institute of
Physical and Chemical Research (RIKEN),
University of Cagliari, Case Western
Reserve University, University of Chicago,
University of Southern California, and
University of California, Davis

IND FDA and TFDA approved anti-cancer
drug developed by Dr. Liou Jing Ping,
Dean of College of Pharmacy, for Phase

I clinical trial. The trial was completed
successfully.

Dr. Liou Jing Ping, Dean of College
of Pharmacy, was awarded the 10th
Junior Biomedical Award of TienTe Lee
Biomedical Foundation

Dr. Chang Wei Chiao, Vice Dean of Collage
of Pharmacy, was awarded the 2016 Chen-
Yuan Lee Excellent Research Award

Launched Pharmacotherapy Program
with American College of Clinical
Pharmacy, leading the trend of clinical
pharmacy in Taiwan

Established Research Center for
Pharmacoeconomics as the only
department offering Health Technology
Assessment program in Taiwan

A total of 15 Doctors of Pharmacy were
trained in America, with the number
being the highest in Taiwan. Eight of the
US-trained doctors are Board Certified
Psychiatric Pharmacists, which accounts
for more than half of total pharmacists
with board certification in Taiwan

Founded in 2000

COLLEGE OF PHARMACY

Founded in 2000, College of Pharmacy offers an innovative pharmacy curriculum and enjoys an international reputation in imparting high quality education and training in pharmaceutical sciences.

The alumni of the college have established themselves as successful pharmacy professionals and emerged as a force strongly influencing the health care sector by holding leadership positions in the industrial as well as academic sector.

One of the three founding schools of Taipei Medical College, School of Pharmacy was established in 1960. The school has approximately 30 full-time faculty members, and comprises two departments: Department of Pharmaceutical Sciences and Department of Clinical Pharmacy. The Department of Pharmaceutical Sciences offer courses in pharmaceutics, pharmacognosy, medicinal chemistry, pharmaceutical analysis and other related disciplines and the Department of Clinical Pharmacy focuses on clinical research and internship training in hospitals or other medical facilities. To resonate with the latest demands of the pharmacy education, School of Pharmacy has established an international exchange program, which allows third-year students to study clinical pharmacy and leadership in well-known universities in the US including USC, UIC, UCONN and GSU. The school has also signed dual degree assignments with USC Master's Program in Regulatory Science. Overall, the school has shifted the focus of curriculum design from being solely product-oriented to patient-oriented with an aim to prepare our graduates as truly professional pharmacists.

The Graduate Institute of Pharmacognosy is the only college of pharmacy in Taiwan that comprehensively focuses on research in pharmacognosy field. The programs of the institute focuses on natural medicine research and clinical practice, exploration of natural resources of Taiwan, the study of natural products and their bioactivity as well as the study of Chinese medicine genomics. The institute has also set up joint dual degree program with ACAOM to offer Master of Integrative Wellness Management Program in view of the increasing demand for Chinese medicine. To cultivate

interdisciplinary skills in students via integration of knowledge and clinical experience, the institute has also established academic-industry collaboration by including industry experts in the team of faculty members.

Master's Program in Clinical Pharmacogenomics and Pharmacoproteomics allows clinical pharmacists to receive the latest training in pharmacogenomics and pharmacoproteomics. All caregivers can apply the training and their clinical knowledge to personalized treatment. To foster students' interdisciplinary thinking and broaden their international perspective, this program invites well-known foreign scholars as visiting professors to enhance the quality of education and research.

Ph.D. Program in Clinical Drug Discovery from Botanical Herbs aims to cultivate innovative talent in research and development of herbal medicine in order to promote academic-industry cooperation. A joint dual Ph.D. degree program with Department of Life, Environmental and Drug Sciences, University of Cagliari has also been set up with an aim to expand the horizon of student's international contacts, thus imparting awareness to them about the globally increasing competitiveness in the field of pharmacy.

College of Pharmacy produces the best result of knowledge-based economy through the industrial innovation R&D courses, guidance of industry mentors, industrial R&D training, and the counseling platform of TMU Industry-Academia Collaboration and Incubation Operation Center. We further expect the research results to be applied in industry to optimize the industrial environment and achieve the goal of building a sustainable university.



Departments

School of Nursing

Bachelor, Master's and Ph.D. Programs

School of Gerontology and Health Management

Bachelor and Master's Programs

Master's Program in Long-Term Care

Post-Baccalaureate Program in Nursing

Honors and Specialties

Established Master's Program in School of Gerontology and Health Management in 2018

Offered joint Ph.D. Program with University of Wollongong

Offered joint Master's Program with Universitas Gadjah Mada

Established Research Center of Active Ageing and Intelligence Clinical Nursing Skill Center in 2017

Established Post-Baccalaureate Program in Nursing and International Doctoral Program in Nursing in 2016

Designate long-term care as research specialty

Three leading research teams: Mind-Body Research Team, Evidence-based Translational Research Team, and Exercise Science Elderly and Chronic Disease Laboratory

Establish partnership with over 200 universities around the world, with 100 students taking part in practicum

Ranked 73th in the QS World Universities Ranking in Nursing; Ranked 9th in the QS Asian Universities Ranking in 2019

Founded in 2000

COLLEGE OF NURSING

Since its inception in 1963 first as a 5-year junior college program, the College of Nursing has been devoted to educating health care professionals and launching research programs as well as clinical scholarship to advance the science of nursing and improve the quality of health care. We offer a comprehensive training plan, including Bachelor, Master's and Ph.D. Programs, to cultivate outstanding nurses and higher educated workforce. In 2016, the Post-Baccalaureate Program in Nursing was established to bring more professionals to Taiwan.

In response to the growing demand for trained professionals in aged care, the College established the School of Gerontology Health Management in 2007 and started to offer Master's Program in 2018. The College has also established Master's Program in Long-Term Care in 2013.

In terms of teaching, the College has professional teaching and research teams, and integrates resources from TMU and six affiliated hospitals for students to conduct their practicum in appropriate institutions or communities. It also provides high technology simulation materials for teaching, OSCE and interdisciplinary professional courses. In 2017, the College re-built the Intelligence Clinical Nursing Skill Center (ICNSC), which enables students to practice clinical skills in a safe environment. ICNSC is equipped with high technologies, including Bedside Intelligence Service System and Vascular Simulation System to enhance students' nursing skills, professional knowledge, communication skills and ability of cooperation. These systems also help faculty and research staff better identify problems during practice.

In the research area, the College emphasizes research performance and academic achievement. Our faculty members have led outstanding research projects that widely recognized in national and international journals and conferences. Over the past 5 years, we have been awarded research grants from various national institutions. Our research papers and academic presentations have a strong track record of published work in top-rated journals. These publications represent

our significant contributions to nursing knowledge and evidence-based nursing. Our faculty members are also often invited as editors or reviewers of these national and international journals. Moreover, the College houses the Research Center of Active Ageing (RCAA), which is a college-leave research center to serve the elderly as a day care center as well as a "smart living lab" for teaching and research. Through intensive research efforts, we aim to develop a holistic care discourse on ageing society from the medical, social, cultural and environmental perspectives.

As for international collaborations, the College has maintained strong partnerships with well-known universities and college in the world as a part of the effort to build up a group of health care specialists with professional knowledge, humanity cultivation and global competitiveness. The College host annual international conference, and promote frequent mutual visits with sister schools and research collaborations. We also encourage students' participations in global practicum and joint degree in Master's and Ph.D. Programs, as well as overseas medical services to broaden their international horizon. Furthermore, the College established an international Ph.D. Program in Nursing in 2016 to recruit more foreign students, marking a milestone for the College of Nursing at Taipei Medical University.

Our faculty members have taken a leading role in national and international nursing associations, and participate in numerous well-known nursing societies. They devote themselves in teaching, research and service to achieve TMU's educational goals. As a result, our alumni hold various positions from vice superintendent, director, supervisor, head nurse to assistant head nurse in hospitals and other healthcare institutions. We will continue our efforts to cultivate health care professionals and promote research and innovation with the goal to build an internationalized and outstanding college.



Departments

School of Public Health

Bachelor's, Master's, Ph.D. programs

Graduate Institute of Injury Prevention and Control

Master's, Ph.D. programs

Master's Program in Global Health and Development

Ph.D. Program in Global Health and Health Security

All-English program

Master's Program in Applied and Molecular Epidemiology

Health Policy and Care Research Center

Research Center of Global Health Security

Research Center of Health Equity

Dr. Chi-Chin Huang Stroke Research Center

Honors and Specialties

Established the nation's first Graduate Institute of Injury Prevention and Control in 2000.

Established the nation's first all-English master's degree program.

In 2008, Research team honored with 6th National Innovation Award.

College faculty and students promoted motorcycle helmet legislation and the Tobacco Hazards Prevention Act.

College faculty received various domestic and international honors (National Quality Awards, Medical Dedication Awards, APACPH Outstanding Contribution Awards, Ministry of Health and Welfare Third Class Medal, and Fulbright fellowships etc.)

Founded in 2011

COLLEGE OF PUBLIC HEALTH

The College of Public Health was founded in 2000 and is comprised of the School of Public Health (Undergraduate, Master's, and Ph.D. Program), Graduate Institute of Injury Prevention and Control (Master's and Ph.D. Program), Master's Program in Global Health and Development, Ph.D. Program in Global Health and Health Security, and Master's Program in Applied and Molecular Epidemiology. We also have a research center: the Health Policy and Care Research Center.

The School of Public Health focuses on the development of three areas: Biostatistics & Epidemiology, Community Health, and Environmental Health. We aim to cultivate public health experts and promote major health issues. For example, the school established Healthy Work Environment Promotion Center to evaluate the health of work environments and promote tobacco hazards prevention. It has helped improve the work environment of more than 2,000 workplaces and protect the health of workers.

The "Head and Spine Trauma Database," established by the Trauma Prevention Center under the College of Public Health, is one of the biggest trauma databases in the world. The school also established the Air Medical Emergency Service Center and the Telehealth Telecare Center jointly with the Ministry of Health and Welfare to provide emergency medical service to remote areas in the country, saving millions of government fund.

The Master's Program in Global Health and Development and the Ph.D. Program in Global Health and Health Security offer an all-English curriculum to recruit foreign students. The programs provide knowledge of Taiwan's healthcare insurance system and disease prevention efforts to international students with an aim to share Taiwan's experience in the areas and promote global cooperation.

As medical technology evolves and advances precision medicine and personalized preventive medicine, Taipei Medical University established the Master's Program in Applied Molecular Epidemiology in 2017. The program, different from the regular epidemiological training based on methodologies, focuses more on the benefits of the industry and policy applications. The curriculum includes Molecular Biology, Big Data Analysis, and Cost-Effectiveness. It encourages students from various professional backgrounds to join and build integrated and value-added platforms for interdisciplinary training.

In addition, the program cultivates students' international perspectives by organizing international professional forums on topics including precision medicine, biometrics, and disease prevention interventions. These forums create opportunities of knowledge exchange and practical experiences for students. It further establishes internationalization and interdisciplinary learning platforms to increase students' international mobility.

In the future, we will enhance the quality of research and teaching through accreditation internally and externally, such as the CEPH (the Council on Education for Public Health) accreditation, through organizing interdisciplinary research teams, recruiting talent, gathering research resources, and promoting internationalization. Meanwhile, we will continue to equip our graduates with solid capabilities and competitiveness in the workplace, making the College of Public Health at TMU the best choice for students in Asia.



Prof. Yun Yen, President



Jacqueline Whang-Peng, Academician



Leroy F. Liu, Academician



Barry J. Hoffer, Academician, NIH



Hsing-Jien Kung, Academician



James S. Miser, President, Crossroads



Horace H. Loh, Academician



Andrew H.-J. Wang, Academician



William G. Nelson, Johns Hopkins Medicine

Departments

School of Medical Laboratory Science and Biotechnology

B.S. and Master

Institute of Biotechnology in Medicine

Graduate Institute of Biomedical Informatics

Master and Ph.D. programs

Institute of Cancer Biology and Drug Discovery

Institute of Translational Medicine

Institute of Neural Regenerative Medicine

Honors and Specialties

Established Asia's first Graduate Institute of Biomedical Informatics in 1998

Founded the TMU Joint Biobank in 2009

Inaugurated the Taipei Medical University Center of Excellence for Cancer Research (TMU CECR) in 2010

Professor Yu-Chuan (Jack) Li was elected as the first Taiwanese academician in the American College of Medical Informatics

The founder of TMU Institute of Neural Regenerative Medicine, Prof. Wen-Ta Chiu, was appointed as Taiwan's Minister of Health and Welfare in 2011

In 2014, the Graduate Institute of Biomedical Informatics was the first department in Asia to receive International Medical Informatics Association accreditation in both Master's and PhD Programs

Established the Ph.D. Program for Medical Biotechnology in 2015

Professor Yu-Chuan (Jack) Li was honored with the 2015 Outstanding I.T. Elite Award

Professor Wei-Chung Yang was honored with the 2015 National Innovator Award

Hosted TMUxMIT Hackathon in 2016-2018

Founded in 2011

COLLEGE OF MEDICAL SCIENCE AND TECHNOLOGY

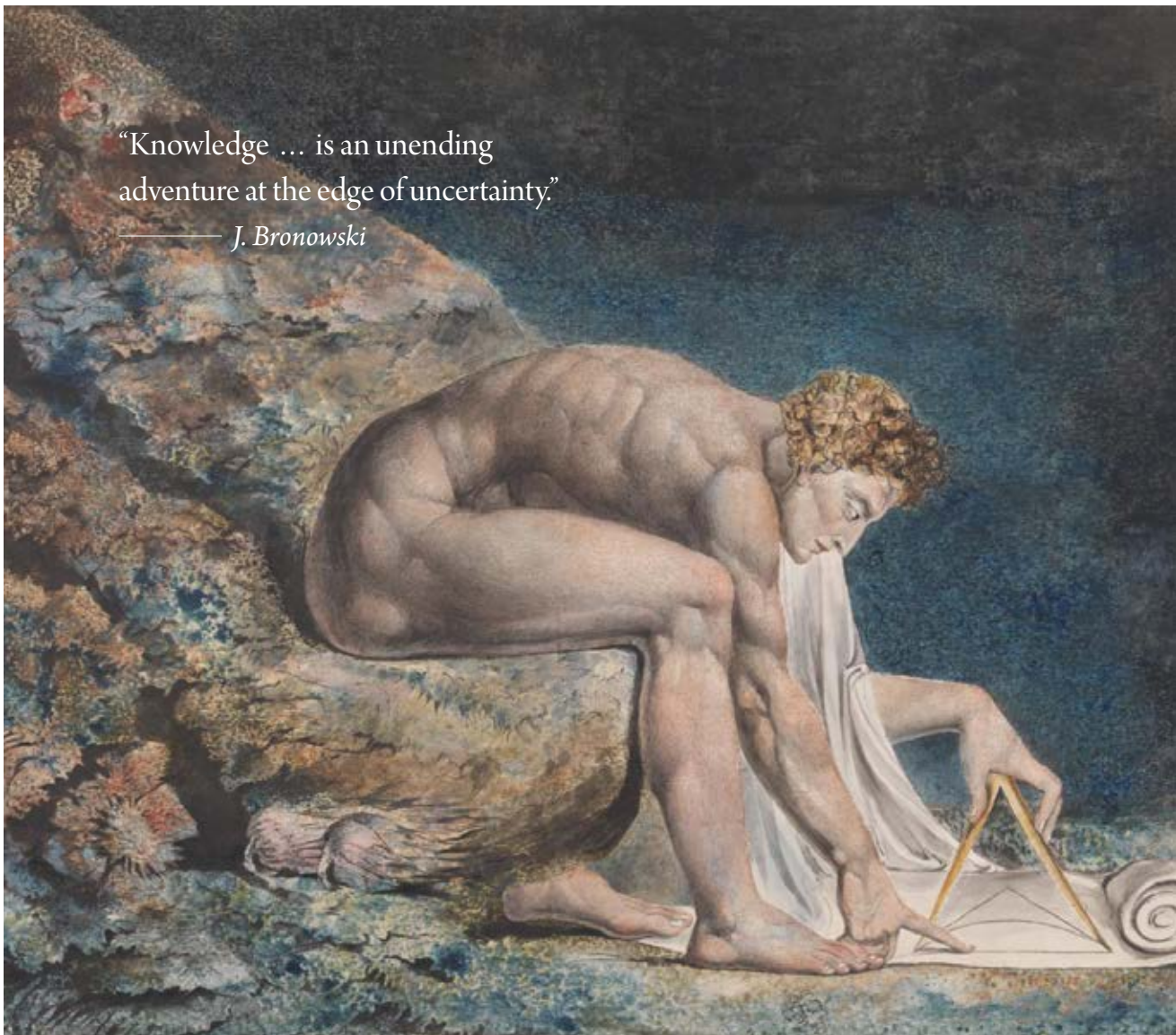
CoMST currently has 65 full-time professors, 45 adjunct professors, and 14 Chair Professors (including 8 academicians from Academia Sinica). The college is also home to 300 undergraduate students and 356 master and Ph.D. students, with international students accounting for 14% of graduate institute enrollment.

Seeking to become the most internationalized and research-oriented college of its kind, the College of Medical Science and Technology has established seven units: the School of Medical Laboratory Science and Biotechnology, the Graduate Institute of Biomedical Informatics, the Ph.D. Program for Molecular Cancer Research and Drug Discovery, the Ph.D. Program for Neuro-regenerative Medicine, the Ph.D. Program for Translational Medicine, the Ph.D. Program for Medical Biotechnology, the Graduate Institute of Cancer Research and Drug Discovery.

The college focuses on the translation of information and communication technology, biotechnology, biomedical engineering and biomedical informatics into clinical and health care applications. It aims to build up links among industries such as electronics, computers, medical devices and health services. The college established the Center for Translation Medicine to combine the Biorepository Information System with an up-to-date-hospital-level tissue bank, seeking to enhance clinical research conducted with TMU's affiliated hospitals. This joint biorepository hosts more than 200,000 tissue specimens, and the number continues to grow.

“Knowledge ... is an unending
adventure at the edge of uncertainty.”

— J. Bronowski



Departments

**Graduate Institute of Humanities in
Medicine (GIHM)** Master's Degree

**Graduate Institute of Health &
Biotechnology Law (GIHBL)** Master's
Degree

**Graduate Institute of Mind, Brain,
and Consciousness (GIMBC)** Master
and Ph.D. Program

**TMU-Shuang Ho Hospital, Brain
and Consciousness Research Center
(BCRC)**

Founded in 2011

COLLEGE OF HUMANITIES AND SOCIAL SCIENCES

The College of Humanities and Social Sciences (CHSS) devotes special attention to internationalization and the integration of research with pedagogy. We attract faculty and students from each continent and more than one-third of our courses are taught entirely in English, with foreign and Taiwanese students attending classes together. For research and pedagogy, we are concerned both with empirical and with normative problems. As to the empirical, we conduct social science investigations, as well as research that focuses on the mind-brain; concerning the mind-brain, we give special emphasis to investigating the nature of conscious experience. As to the normative, we conduct research related to legal and ethical issues. Most of our work is inter-disciplinary and a significant portion is designed so as to complement our College of Medicine, as well as our university's extensive network of hospitals.

In 2019, the Graduate Institute of Humanities in Medicine (GIHM) begins to readjust its focus, concentrating principally on the social sciences, especially sociology, both quantitative and qualitative. The Graduate Institute of Health and Biotechnology Law (GIHBL), likewise is beginning to readjust its focus: as before, much attention is devoted to Taiwanese legal policies that pertain to translational medicine, pharmaceuticals, biotechnology, as well as food and drug regulation. But now it also is extending its scope to include public health law, in an international context, along with bio-medical ethics. In the Graduate Institute of Mind, Brain and Consciousness (GIMBC) faculty and students, domestic and international, work together in a joint effort to understand the mind-brain nexus in healthy subjects as well as in neurological or psychiatric patients.

Currently CHSS offers MA degrees in social science (GIHM) and in law (GIHBL). GIMBC offers both an MS degree, as well as a Ph.D. We are, moreover, in the process of creating an undergraduate degree program that focuses on neuroscience, but that integrates certain aspects of social science and law. That is, the curriculum will include social and forensic neuroscience.

In our studies of society, law, and the mind-brain, we aim for consilience: that is, whenever possible, we seek to identify points of contact, even coherence, between the sciences and the humanities, between the empirical and the normative. In a similar spirit, we seek points of contact between Taiwan and other countries in the international community, recognizing that insularity is a pathway to intellectual stagnation. As we enter the middle decades of the 21st century, we aspire to understand the world as it is, and to imagine the world, as it might become.



Departments

School of Biomedical Engineering

Bachelor's program

Graduate Institute of Biomedical Materials and Tissue Engineering

Master's and Ph.D. programs

Graduate Institute of Nanomedicine and Medical Engineering

Master's and Ph.D. programs

International Ph.D. Program in Biomedical Engineering

Ph.D. program

Graduate Institute of Biomedical Optomechatronics

Master's program

Honors and Specialties

CBME offers a complete educational and research program in biomedical engineering through its undergraduate and graduate programs

Through CBME Graduate institutes, dual MS and PhD degrees with several foreign universities are available

CBME has established several research collaborations with international research institutes and universities throughout the world

CBME has access to over 130 sister schools in America, Asia, Europe, Africa and Oceania through links established at the TMU level

Founded in 2015

COLLEGE OF BIOMEDICAL ENGINEERING

The College of Biomedical Engineering (CBME) was established in 2015 focused on inter-disciplinary research at the intersection of basic science, translational medicine, and engineering. CBME faculty possess a diverse variety of educational backgrounds and research expertise, ranging from clinical doctors, surgeons and molecular biologists to materials scientists, electronic engineers and physicists. All CBME faculty are dedicated to improving human health and wellbeing through the application of sound engineering and scientific principles. After only three years since its formation, CBME made the list of top 150-200 biomedical engineering programs in the world.

CBME provides high quality educational programs at the undergraduate and graduate level, including internship opportunities in affiliated hospitals and private biotech and medical device companies in Taiwan. This provides hands-on practical experience for students to understand real-world applications of biomedical research. The internationally-directed CBME also provides dual-degree programs, scholarly exchange programs and research collaboration opportunities for students via partnerships with leading institutes such as the University of Southern California and Case Western Reserve University, USA; University of Lille, the University of Bourgogne Franche-Comté, FEMTO-ST Institute, and INSERM research units, France; University of Tasmania, Australia; and Tokyo University of Science, Japan.

Students who graduate from CBME programs have developed into highly-skilled biomedical engineers with a strong scientific background and profound understanding of ethical, social, and economic implications of their work. Moreover, many of our undergraduates continue their education with a graduate degree in engineering, medicine, or life sciences.

Biomedical research and development is one crucial element of Taiwan's economic development roadmap. There is a rapidly growing market demand for biomedical technologies such as medical devices, diagnostic implants, joint replacements, drug delivery systems, protein therapeutics, tissue- engineered grafts, cellular, subcellular and nanomedicine therapies. This demand is expected to increase even further as the local and global society continues to age. The Taiwan Society of Biomedical Engineering is currently formulating a board certification mechanism for biomedical engineers. Therefore, we envision that there will continue to be a need for highly-trained biomedical engineers with research experience, and that a degree in biomedical engineering is a sound investment for a successful career.

The Graduate Institute of Biomedical Materials and Tissue Engineering (GIBMTE), Graduate Institute of Nanomedicine and Medical Engineering (GINME), School of Biomedical Engineering (SBME), International Ph.D. Program in Biomedical Engineering (IPBME) and Graduate Institute of Biomedical Optomechanics (GIBOM) accommodate domestic and international undergraduates, master's, Ph.D. and postdoctoral trainees. All graduate-level courses are conducted in English with students from close to 10 countries, representing a proportion of over 50% at PhD level. We trust that this diverse, clinical-centered research and educational environment will generate strong momentum for Taiwan's biomedical technology industry and biomedical engineering research at a global level.

Through our continuous efforts, through the unique links our university has with its affiliated hospitals, and due to our location in the dynamic and friendly environment of Taiwan, our College has all the potential to develop into an internationally successful biomedical engineering hub.



Departments

School of Health Care Administration

Graduate Institute of Data Science

Biotechnology Executive Master of Business Administration (EMBA)

Biostatistics Center

Big Data Research Center

History

2000 Established School of Health Care Administration

2013 Established Biostatistics Center

2015 Established Graduate Institute of Data Science

2015 Established Biotechnology Executive Master of Business Administration (EMBA)

2015 Established Big Data Research Center

2015 Established TMU Big Data Plus Alliance and Resource-sharing Platforms

2015 Organized quarterly Biotechnology Data Trend Forum in cooperation with KPMG Global Taipei office

2016 Established Master's Program for Big-Data Technology and Management

Founded in 2015

COLLEGE OF MANAGEMENT

In 2015, Taipei Medical University established the College of Management in response to the growing needs in a competitive environment by integrating information technology and innovative management theory. Focusing on the needs of the new big-data generation, the college cultivates managerial talent in health system administration with vision, skills and international perspectives.

School of Health Care Administration: Since the National Health Insurance program launched in 1995, the demands for administrative personnel at medical institutions increased. In response to a changing health insurance system, TMU established the school in 1997 with an aim to improve the system's operational and academic research standards. In 2009, the school established International Master's Program and accepted foreign students to promote international exchange and the university's expertise. The program, the nation's first English master's program in health administration, attracts students from Taiwan's diplomatic allies and countries with less resource.

Graduate Institute of Data Science: The institute focuses on the training in areas that meet the trends of the big-data industry, including innovative information applications, advanced technologies, data analysis and decision planning. The faculty combines practical experience in information management with expertise in data analysis, operational management and big-data industries. Through exchanges with world-renowned universities, the institute aims to join the ranks of the world's top big-data graduate institutes.

Biotechnology Executive Master of Business Administration (EMBA): To narrow the gap between education and industry, the program strengthens academia-industry collaboration in education and nurtures talent catering to industry needs. A series of courses integrated with big-data management have been designed for medium- to higher-level executives. The courses are taught by industry experts to equip students with interdisciplinary skills, as well as biotechnology and management knowledge. To apply theory to practice, students have the opportunities to work in related industries and gain practical work experience. The school has also organized a quarterly Biotechnology Data Trend Forum in cooperation with KPMG to further cultivate graduates as management-level talent.

Biostatistics Center: The facility enhances TMU's competitiveness by implementing biometry teaching integration, providing statistical consultation services, and assisting in academic and other international research. Statistical consultation and analysis services are available for students, full-time faculty members, staff and full-time TMU hospital workers. The TMU hospitals' medical and clinical resources are provided to improve academic research through mutual learning and cooperation. In terms of academics resources, the center offers biometrics courses to equip students with fundamental knowledge. Academic presentations and clinical courses are also available to cultivate students' expertise.

Big Data Research Center: The center integrates big-data analysis with relevant industry requirements, and implements relevant technological and framework analysis thinking. With the integration of resources in the College of Management, the center promotes data analysis, academic research, industrial exchange, and talent cultivation. In December 2015, the Taipei Big-Data Plus Alliance was launched to build up cooperation among industry, government, academics and researchers. It provides four platforms where users can share resources with others in an environment of mutual trust and reciprocity.



Departments

School of Nutrition and Health Sciences

Bachelor's, Master's, Professional Master's, Ph.D. programs

Master's Program in Food Safety

School of Food Safety

Bachelor's Program

Graduate Institute of Metabolism and Obesity Sciences

Master's Program

Research Center of Nutritional Medicine

Research Center of Geriatric Nutrition

Honors and Specialties

Established the School of Nutrition and Health Science in 1979

Teikyo-Harvard Program – Launched Harvard Special Session at Teikyo University in Japan since 2015.

Cherry Blossom Technology Project- Launched the training program in cooperation with Tohoku University in Japan since 2016.

Established the nation's first College of Nutrition in 2016

Established the nation's first Master's Program in Food Safety in 2016

Established Research Center of Nutritional Medicine in 2016

Established the Research Center of Geriatric Nutrition in 2017

Established the nation's first Bachelor's Program in School of Food Safety in 2017

Established the nation's first Master's Program in Graduate Institute of Metabolism and Obesity Sciences in 2017

Founded in 2016

COLLEGE OF NUTRITION

Based on the concept of "Life counts on health, and health counts on nutrition," the School of Nutrition and Health Sciences, founded in 1979, is the first school of the College of Nutrition, with master's program, professional master's program, and doctoral programs established in 1995, 2000, and 2002, respectively. The school provides trainings in areas of therapeutic nutrition, nutrition research, food service management, and quantity food production, planning, and management, aiming to strengthen public health promotion. The school has over 3,300 outstanding alumni in the nutrition-related field, and has the highest passing rate for the registered dietitians in the nation.

With increasing emphasis on food safety and need for food safety experts, we established Taiwan's first master's and bachelor's programs in food safety in 2016 and 2017 respectively. These programs aim to enable students with capabilities of risk assessment, crisis management, research and practical skills, problem discovering and solving, and global perspectives. The goal is to foster more outstanding professionals in this field so that they can provide the knowledge in food safety to the society. As an approach towards preventive medicine, and to

promote public health on the issue of weight management and metabolism, we established Taiwan's first master's program in the Graduate Institute of Metabolism and Obesity Sciences in 2017. By integrating research and practice in translational medicine from bench to bedside, the program aims to cultivate interdisciplinary specialists in community prevention and clinical intervention of obesity and metabolic diseases.

In addition to teaching, the college also dedicated efforts to conduct research works and fulfill social responsibility. The Research Centers of Nutritional Medicine and Geriatric Nutrition were established in 2016 and 2017 respectively to integrate research, development, and application in functional foods and nutritional care for the elderly by combining clinical and basic research.

Being the first College of Nutrition in Taiwan, we offer extensive resources in bridging the students with the global community. We provide a number of international activities including exchange student programs, international internships, summer school programs, and dual-degree programs in partnership with world-renowned universities. Furthermore, we continue to expand the MOOCs curriculum as well as promote academia-industrial cooperation. The College of Nutrition strives to become the home to the best professionals in nutrition and food safety in Asia.



Founded in 2017

COLLEGE OF INTERDISCIPLINARY STUDIES

Bridging gaps between clinical, professional and liberal education, the College of Interdisciplinary Studies (CIS) was established in 2017 to deal with educational issues and emerging social challenges when fostering innovation.

Our mission is to transcend disciplinary boundaries and develop students' problem-solving abilities. CIS helps students build skills to identify problems, integrate diverse information, generate and implement creative ideas, gain international perspectives and take the initiative to solve problems. The college serves as a platform for collaboration among TMU's colleges.

CIS is currently composed of 3 centers, including Interdisciplinary Learning Center, an Innovation Entrepreneurship Education Center and a Digital Initiative Center. We are located in the center of the TMU

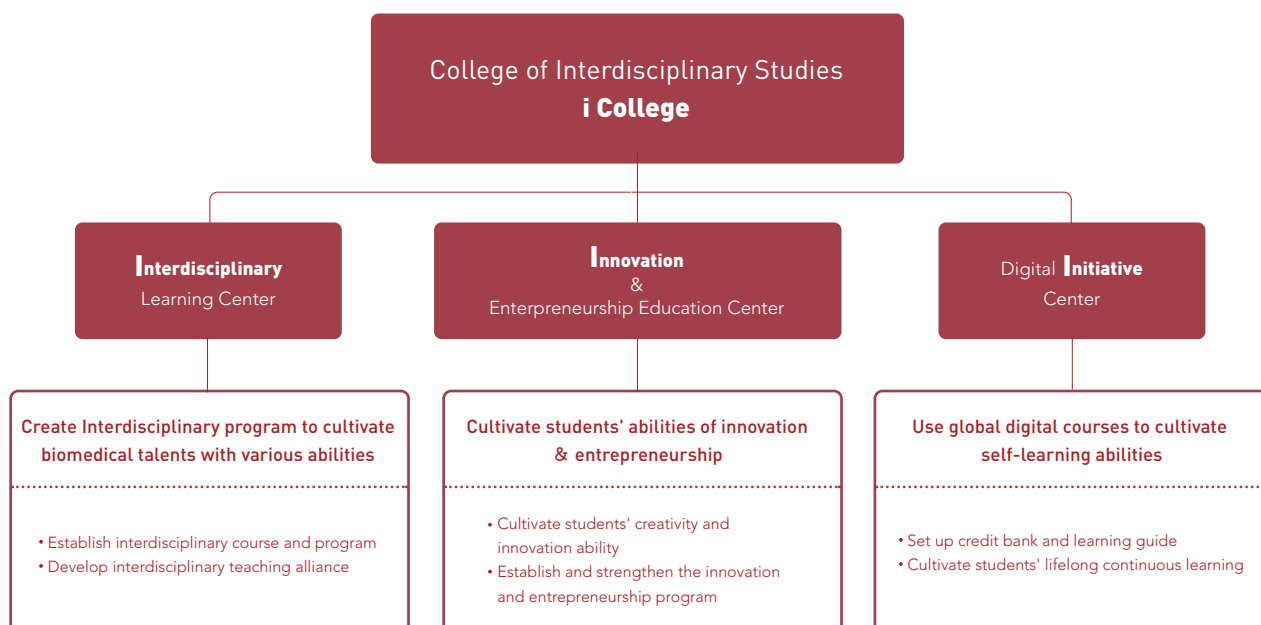
campus in the Auditorium Building, with an interdisciplinary learning space on the first floor and a "maker space" in the basement.

The Interdisciplinary Learning Center offers student programs, modules and courses in artificial intelligence, new media, and innovation and entrepreneurship. The college also leads a faculty-based learning community to increase cooperation among different colleges or areas of studies.

The Innovation and Entrepreneurship Education Center fosters health innovations by integrating entrepreneurship education and relevant TMU resources.

The Digital Initiative Center encourages students to pursue their first life-long learning experience by awarding credits and skills funds through the well-known MOOCs (Mass Open Online Courses).

CIS offers well-equipped facilities and dedicates its efforts to promote interdisciplinary studies, aiming to cultivate biomedical talent for better development of Taiwan's health systems.



TMU HEALTHCARE SYSTEM

Taipei Medical University



The Taipei Medical University Healthcare System includes the world-class Taipei Medical University and six affiliated hospitals:

Taipei Medical University Hospital

Wanfang Medical Center

Shuang Ho Hospital

TMU Taipei Cancer Center

TMU Taipei Neuroscience Institute

LiHuiLi Eastern Hospital

A combined capacity of more than 3000 beds puts us among the largest healthcare systems in metropolitan Taipei. We deliver comprehensive and coordinated services by integrating primary and specialty care with research and education.

Founded in 1976

TAIPEI MEDICAL UNIVERSITY HOSPITAL

Contact Information

No. 252, Wuxing St., Xinyi Dist., Taipei City
11031, Taiwan

Tel +886-2-2737-2181 ext. 8417-8428

Fax +886-2-2736-9169

Email ihc@h.tmu.edu.tw

english.tmu.org.tw

Taipei Medical University Hospital (TMUH), founded in 1976, provides patient-centered comprehensive medical service with 800 beds, 27 specialty and 47 subspecialty medical departments, and more than 2000 medical staff. TMUH was accredited four times by JCI accreditation since 2009, which authenticates the high-quality service and world-class patient care we provide.

TMUH's goal is to become an internationally renowned university hospital with advanced Emergency Critical Care Medicine and international Pioneering Medical Services. TMUH offers diversified services with specialized centers, including Center for Reproductive Medicine, Weight Management Center, Cleft and Craniofacial Center, Breast Medical Center, Chest Medicine Center, and Cell Therapy Center. The hospital also features the Dream Way Clinic, which provides a private and independent space for comprehensive medical consultation and health counseling service.

In terms of international recognition, TMUH is the 2nd hospital in Taiwan to receive accreditation by the Association for the Accreditation of Human Research Protection Programs Inc. (AAHRP). TMUH has been accredited twice, with the latest accreditation in 2017 achieved "Full Reaccreditation." This demonstrates TMUH's high quality in clinical trial and protection of research participants.

TMUH is also a leading Smart Hospital in Taiwan by integrating the automatic service and portable integrated medicine system, as well as IoT management application to provide patient-friendly healthcare services. We aim to provide a fresh hospital experience and serve patients and their families in a warm and friendly environment.



Founded in 1997

TAIPEI MUNICIPAL WANFANG HOSPITAL

Contact Information

No.111, Sec. 3, Xinglong Rd., Wenshan Dist.,
Taipei City 11696, Taiwan

Tel +886-2-2930-7930 ext. 7766

Fax +886-2-8662-1135

Email ims@w.tmu.edu.tw

www.taiwanhealthcare.com

Located next to a major mass rapid transit station in Taipei, Taipei municipal Wanfang hospital (managed by Taipei Medical University) has 743 beds and over 300 specialists from every medical field. Since opened in 1996, the hospital has strived for comprehensive quality management to ensure top-quality care for patients. In demonstrating the motto: "taking pride in our quality of service," Wanfang hospital becomes the first hospital in Taiwan to receive Joint Commission International (JCI) accreditation for five times in 2006, 2009, 2012, 2015 and 2018. It is also the first hospital in Taiwan to set up an international medical center, providing bilingual, individualized medical services to patients from 38 countries.



Founded in 2008

TMU SHUANG HO HOSPITAL

Contact Information

No.291, Zhongzheng Rd., Zhonghe Dist.,
New Taipei City 23561, Taiwan

Tel +886-2-2249-0088 ext. 8807, 8809

Fax +886-2-2249-0088 ext. 8760

Email ims@stmu.edu.tw

www.shh.org.tw

Opened in 2008, Shuang Ho Hospital offers outpatient, inpatient and emergency services including over 40 different specialties and subspecialties. The 1578-bed hospital received JCI accreditation in 2009 and was re-accredited in 2012, 2015 and 2018.

It also received ISO 9001, 15014001, and ISO 27001 certification. The hospital is equipped with advanced technologies such as PET-CT, 3T-MRI, Gamma Knife, Tomotherapy and the da Vinci Surgical System. Furthermore, we own the only approved medical heliport in New Taipei City, providing emergency transfers by air for acute patients from other areas. Operating with a mission of caring, commitment and innovation, Shuang Ho Hospital serves its patients with high-quality health care.



Founded in 2013

TMU TAIPEI CANCER CENTER

Contact Information

No.250, Wuxing St., Xinyi Dist.,
Taipei City 11031, Taiwan

Tel +886-2-6636-9060

Fax +886-2-6639-7181

Email itcc@h.tmu.edu.tw

www.cancertaipei.tw

TMU Taipei Cancer Center is the first cancer center in Taiwan that provides comprehensive services from cancer prevention, screening, diagnosis, treatment, to long-term follow-up and consultation.

Our multidisciplinary care team, led by cancer physicians including nurses, pharmacists, nutritionists, social workers, psychologists, and other medical professionals, provides personalized care and treatment plans. With the assistance of the Artificial Intelligence systems, Watson for Oncology and Watson for Genomics, the clinicians develop individualized cancer treatments and precision medicine for each patient.

Through the expertise of the internationally recognized Taipei Medical University Translation Research Center, we combine newly developed treatment plans with current therapies to maximize the outcomes. In addition, the Taipei Cancer Center provides new and effective therapies for difficult-to-treat and late-stage cancer patients.

The Proton Center, scheduled to complete in 2020, will provide fourth generation proton therapy with pencil-beam technology and cone-beam CT navigation. This new radiotherapy technology will greatly enhance the quality of medical care and outcomes for patients with cancer.



Founded in 2017

TMU TAIPEI NEUROSCIENCE INSTITUTE

Contact Information

No. 291, Zhongzheng Rd., Zhonghe Dist., New Taipei
City 23561, Taiwan

Tel +886-2-2249-0088 ext. 2291

Email tmu.tni@tmu.edu.tw

Taipei Neuroscience Institute (TNI) was established in 2017 after the integration of all the departments of neurosurgery, neurology, neuroradiology, rehabilitation and psychiatry of the university's three affiliated hospitals in Taipei. The integration aims to promote our practice standards in clinical neuroscience, improve our quality of clinical training and education, and enhance our research collaboration between clinicians and basic neuroscientists.

Built upon its solid foundation, the TMU-TNI has 13 departments, including Neuro-oncology, Radiosurgery, Cerebrovascular Disease, Neurorehabilitation, Degenerative Disease, Neuropsychology and Cognitive Function, Spinal Disorder, Peripheral Nervous Disorder, Pain Disorder, Pediatric Neurology, Neurotraumatology and Intensive Care, Vertigo, Sleep Disorders and Headache, and Epilepsy. We place emphasis on interdisciplinary discussions to provide best medical service to patients.

In terms of integration and research, the TMU-TNI collaborates closely with the TMU. Clinicians and scientist work on research projects together and carry out trials with other universities or research institutes in Taiwan and abroad. We promote collaboration between the university and the medical industry, and encourage our teams to host neuroscience seminars and large conferences. Furthermore, we establish a neuroscience research institute in TMU and provide training courses for new students, putting great efforts into nurturing clinical and research talent.

Established with dedication to medical care, the TMU-TNI looks into the future with a desire to further improve neuroscience at home and abroad. Not only do we aim to become a vanguard medical center recognized worldwide, we are also devoted to providing the highest-level health care to the people of Taiwan and neighboring countries.



Since 2015

NINGBO MEDICAL CENTER LIHUILI EASTERN HOSPITAL

TAIPEI MEDICAL UNIVERSITY NINGBO MEDICAL CENTER

Contact Information

1111Jian-Nan Rd. YinZhou District, Ningbo
315040 Zhejiang Province, China

Tel: +86-574-5583 5583

Fax: +86-574-5583 5600

www.nblhldbby.com

LiHuiLi Eastern Hospital provides 1,200 beds with a comprehensive, exceptional, and safe healthcare environment. The hospital commenced operation in Aug. 2015.

Introducing advanced hospital management concepts from TMU and its affiliated hospitals, LiHuiLi Eastern Hospital pioneered hospital cooperation management model in China: the hospital is established by the government operated by the private sector.

Taiwan Hospital Thoughtful Service

TMU management team in Ningbo create a new hospital experience for local people. Simplify the hospital process and combine with high tech resources, User-friendly open counter, and utilize information and communication platform to provide convenience clinic experience.

Medical Quality

With the level of first-class comprehensive hospital, the hospital seeks to practice the "medical ethics" and "humanity and art" within its whole medical service system while integrating Taiwan's high medical standards.

Vision

Patient-centered, Caring, Outstanding and Innovation.



Founded in 2019

TAIPEI MEDICAL UNIVERSITY - HSIN KUO MIN HOSPITAL

Contact Information

No. 152, Fuxing Rd., Zhongli Dist., Taoyuan City 320,
Taiwan (R.O.C.)

Tel +886-3-4225180

Tel +886-3-4228925

Email skmh@skmh.tmu.edu.tw

Taipei Medical University - Hsin Kuo Min Hospital is located near Zhongli Station of Taoyuan City.

Hsin Kuo Min Hospital is the fourth affiliated hospital of Taipei Medical University, which is aiming to become one of the world's top medical schools. In the past half century, thousands of outstanding medical professions have graduated from Taipei Medical University and made great contributions for Taiwan with dedications.

Hsin Kuo Min Hospital has a strong and professional medical team of high quality. Orthopedic surgeons specialize in prevention, diagnosis and treatment of bones, joints, ligaments, tendons, muscles and nerves disorders. Physicians in the department have expertise in all areas of orthopedics, including minimally invasive surgery, spine disorders, joint reconstruction and revision, foot and ankle injuries, hand surgery, and trauma. The Department of Rehabilitation Medicine provides physical therapy, occupational therapy, and other services. We provide rehabilitation services for patients with various musculoskeletal disorders, injuries, or diseases.

Hsin Kuo Min Hospital continually upgrades and improves the quality of medical management system, and provides the best quality and service to the people and local community.



INTERNATIONAL MEDICAL

Taipei Medical University

HEALTH CARE BEYOND BORDERS

Taipei Medical University (TMU) is one of Asia's most prominent medical education institutions, earning its reputation as a global leader with its medical research and achievements. The TMU Health System includes TMU and six affiliated hospitals: Taipei Medical University Hospital, Wan Fan Medical Center, Shuang Ho Hospital, TMU Taipei Cancer Center, Taipei Neuroscience Institute and TMU LiHuiLi Hospital in Ningbo, China.

In order to represent the humanitarian spirit and align with the nation's foreign policy, TMU is dedicated to humanitarian aid by allocating hospital resources since 2009. We share our own successful experience in healthcare to improve health around the world.

Providing healthcare service in the Kingdom of Eswatini

TMU has been the main coordinating organization for the Taiwan Medical Mission in the Kingdom of Eswatini since 2009, following a 2007 medical cooperation agreement between the two countries. Through the TMU Healthcare System, doctors, nurses, public health specialists and other medical and health professionals are dispatched to Eswatini to provide health services and conduct joint education and public health projects with local education and health institutions. Working closely with the Ministry of Health in Eswatini, the Taiwan Medical Mission focuses on the following areas:

- Medical services based on specialty demand
- Clinical capacity building for health personnel
- Public health research and improvement works

Moreover, TMU had constructed the project on the implementation of Straightening Early diagnosis, Care and Treatment of Cancer in 2018. The project provides specialty support locally and cancer-related training program for the Swazi personnel in Taiwan. In 2019, TMU developed Healthcare Improvement Project, which aims to provide comprehensive clinical training for 89 postgraduate doctors from Eswatini within 6 years. The program will enable the Kingdom of Eswatini to elevate the quality of their health care system nationwide.

Taiwan Medical Mission in the Democratic Republic of São Tomé and Príncipe (Terminated)

In 2010, TMU established the Taiwan Medical Mission in the Democratic Republic of São Tomé and Príncipe, offering clinical services, telemedicine, training, and epidemiological investigations on parasitic infections. In 2016, the mission became the Taiwan Center for Medical and Public Health Services managed by TMU. It aimed to become the nation's top health care training center and medical benchmark to improve the health care environment, health quality, and health management.

The main focuses of the center include:

- Medical services: specialty support (Outpatient consultations), telemedicine
- Health Personnel training program
- Public health program: parasite prevention program, water quality survey
- Hospital information system setup

However, Taiwan and STP discontinued diplomatic relations at the end of 2016, resulting in the termination of the medical missions.

Taiwan Health Center in the Republic of the Marshall Islands

Since 2013, TMU's Shuang Ho Hospital has been commissioned by the Ministry of Health and Welfare to manage the Taiwan Health Center in the Republic of the Marshall Islands. In accordance with the foreign policy on the international health and medical assistance to the islands, Shuang Ho Hospital sends physicians and staff to provide medical service based on the needs of the people in the Mashall Islands.

Main tasks of the project include:

1. Medical services: specialty support (Outpatients consultations and surgery)
2. Health personnel training program
3. Teenage health care program
4. Chronic disease prevention program
5. Health information system setup
6. International patient referral program

Shuang Ho Hospital cooperated with the government and NGOs to promote medical cooperation with the Mashall Islands and strengthen the relationship between the two countries while improving the quality of medical services.



LEAD REGIONALLY, CONNECT GLOBALLY



Lead regionally, connect globally

TMU engages with a wide range of academic institutions and business partners to respond to healthcare needs both at home and worldwide. Our extensive professional network benefits the identification of strategic solutions to our common problems. Our high-caliber teaching and research staff actively participate in diverse international activities that help the university develop and deliver top-tier research innovations and educational programs.

Strategic global partnerships

We promote student and staff exchanges for educational collaborations and research through our partnerships worldwide. Our strategic partnerships with over 220 institutions such as Case Western Reserve University, Hokkaido University, Imperial College London, Johns Hopkins University, University of Lille, and University of Southern California have benefited both our academics and students through exchange and training initiatives and research collaboration.

Active outbound mobility

Each year, more than 400 of our students take part in learning activities overseas. They not only explore studying and living abroad, but also broaden their academic horizons and diversify their cultural exposure in locations ranging from Europe to sub-Saharan Africa. Some engage in clinical observation at teaching hospitals and care centers abroad to understand different healthcare systems; others serve through volunteer service, conduct thesis research, or work with scientists at partner institutions to enhance their skills and knowledge.

Growing inbound students

We have welcomed students from more than forty nations to join the TMU family. Our ten colleges and affiliated hospitals regularly host international students for short-term programs, medical electives, and research or laboratory internships. These visiting students work with our faculty members, researchers, and clinical professionals to reinforce their learning in different contexts. Supportive local staff and students help short-term and student visitors gain valuable learning experience while living in Taipei, the culturally diverse capital.



International dual degree programs

In addition to short-term overseas exchanges, TMU students are encouraged to expand their academic experience at our partner institutions through collaborative education programs. As of July 2019, TMU offers 30 dual degree programs with partner institutions worldwide include Biomedical Materials, Tissue Engineering, Bioinformatics, Nutrition and Health Science, Pharmacy, Dentistry, Respiratory Therapy, Nanomedicine, and Public Health. Our students benefit from innovative curriculum design as well as from studying and living in a different country. Such in-depth, cross-cultural exposure enhances their scholarly development and often opens doors to international opportunities in their future careers.

Focused research collaborations

Research collaboration is another key area of TMU's internationalization portfolio. Our clinical professionals and scientists are encouraged to work with their peers around the globe to create synergy in biomedical research. To support this, TMU is committed to working with likeminded institutions to establish mechanism for international research collaborations with a focus on staff mobility and joint research.

We have formed several academic alliances to facilitate dialogues among researchers to identify potential joint research activities, including training of young scientists, exchange and visits of researchers, sharing of research resources, and execution of joint research projects. Many of our faculty members are experienced in conducting international research projects, leading to TMU's track record in winning MOST (Ministry of Science and Technology) grant for projects that support Taiwan's development agenda. In addition to public funding, TMU also set aside financial aid to support international research collaborations, encouraging high-performing academics to continuously facilitate bilateral and multi-lateral exchange of perspectives and expertise to create shared benefits. With a diverse portfolio of symposiums and seminars, networks of academics, and joint research projects, TMU researchers have rapidly expanded their footprint and around one-third of our scientific output has an international connection. Activities as such are expected to grow further in the coming years, and we welcome researchers from around the world to join our exciting journey of innovating biomedical research and healthcare for our communities.

To know more about the TMU experience, visit the University's Website at <https://oge.tmu.edu.tw>

A WELCOMING CAMPUS FOR INTERNATIONAL STUDENTS

International students from more than 30 nations have chosen TMU for its extensive laboratories, research opportunities and all English graduate programs.

The university is a few minutes' walk from Taipei's trendiest entertainment and shopping district; also nearby are the famous hiking trails on Four Beasts Mountain and Elephant Mountain. Reasonable living costs and safe streets make Taipei an ideal destination for students. The excellent public transit system includes a bicycle depot on campus and a subway line that is a few hundred yards away.

Excellent academic offerings

TMU has offered an optimal environment for education, research and personal growth for over 40,000 graduates who provide health care service in Taiwan and overseas.

Praised highly in both international and national evaluations, TMU's programs received top rankings on four primary criteria, including ambitious goals for globalization and development strategy, excellent curriculum for local and international students, and support services for international students' daily lives. Our all-English degree programs and the vast expansion of overseas internships also won highly positive reviews.

Medical services for the global community

Through outreach activities, the TMU community shares its medical and healthcare skills through a wide variety of operations, ranging from permanent medical missions in Eswatini and the Marshall Island to healthcare support to Southeast Asian countries such as Vietnam and Indonesia. TMU students also regularly organize medical service trips to India and underserved communities in Taiwan. In addition, the university supports international graduate students to conduct research in other countries.

Support to international students

TMU is committed to facilitating ease of adjustment for new students with technology-assisted information dissemination and ample resources on campus. The University canteen offers a good selection of food that accommodates our diverse international student and staff. The on-campus copy shop and convenience stores provide a wide range of supplies that cater to students' academic and daily lives. Sports lovers may visit our competition-size swimming pool with a large whirlpool spa, steam rooms and dry saunas, a weight room, table tennis room, and studio for yoga and other physical education classes. Support services for international students include several off-campus dormitories

To know more about the TMU experience, follow TMU Outwards on Facebook or visit the University's Website at

www.tmu.edu.tw/english/main.php

E-mail inquiries can be sent to iss@tmu.edu.tw

(shared apartments), free shuttle service between our campuses and local transit stations, a campus counseling center, prayer spaces, and a Muslim prayer room with ablution facilities, as well as well-furnished laboratories with bilingual training on the operation of all high-tech equipment.

Scholarships and other financial aid

An extensive scholarship program assists most foreign students with their costs of studying and living in Taipei. Other programs support international students in attending conferences, participating in competitions and taking internships abroad. Full scholarship details are as follows:





TAIPEI
MEDICAL UNIVERSITY



Taipei Medical University

ADD : No.250, Wuxing St., Xinyi Dist., Taipei City 11031, Taiwan
TEL : 886-2-27361661
WEBSITE : www.tmu.edu.tw/english



Taipei Medical University Hospital

ADD : No.252, Wuxing St., Xinyi Dist., Taipei City 11031, Taiwan
TEL : 886-2-27372181
WEBSITE : english.tmuh.org.tw



Taipei Municipal Wanfang Hospital (Managed by Taipei Medical University)

ADD : No.111, Sec. 3, Xinglong Rd., Wenshan Dist., Taipei City 11696, Taiwan
TEL : 886-2-29307930
WEBSITE : www.wanfang.gov.tw



Taipei Medical University - Shuang Ho Hospital, Ministry of Health and Welfare

ADD : No.291, Zhongzheng Rd., Zhonghe Dist., New Taipei City 23561, Taiwan
TEL : 886-2-22490088
WEBSITE : www.shh.org.tw



TMU, Taipei Cancer Center

ADD : No.250, Wuxing St., Xinyi Dist., Taipei City 11031, Taiwan
TEL : 886-2-66369060
WEBSITE : www.cancertaipei.tw



Taipei Neuroscience Institute

ADD : No. 291, Zhongzheng Rd., Zhonghe Dist., New Taipei City 23561, Taiwan
TEL : 886-2-22490088 Ext 2291



Taipei Medical University - Hsin Kuo Min Hospital

ADD : No. 152, Fuxing Rd., Zhongli Dist., Taoyuan City 320, Taiwan (R.O.C.)
TEL : +886-3-4225180
Fax : +886-3-4228925
Email : skmh@skmh.tmu.edu.tw